

CHARMILL

RESIDENTIAL



Maple Mews, Maida Vale NW6
£699,950 Freehold

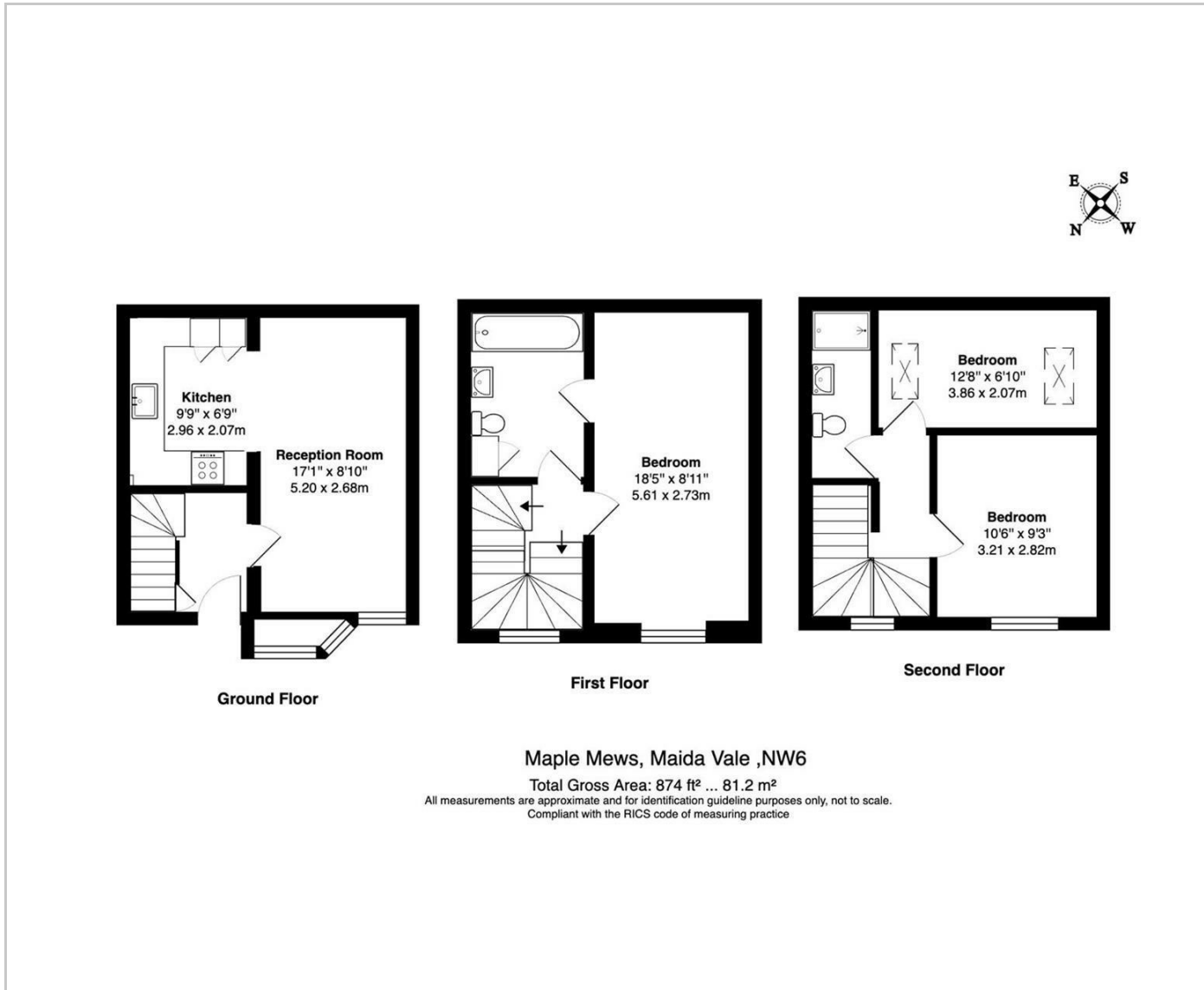


Tucked away in a private gated mews is this brand newly converted three bedroom house. Set over three floors and meticulously designed throughout the house comprises a reception room with a semi open plan fully fitted kitchen on the ground floor. On the first floor you will find a Jack and Jill en-suite bathroom and a large principal bedroom with a Juliet balcony. The second floor comprises a second double bedroom, a family shower room and a third bedroom.

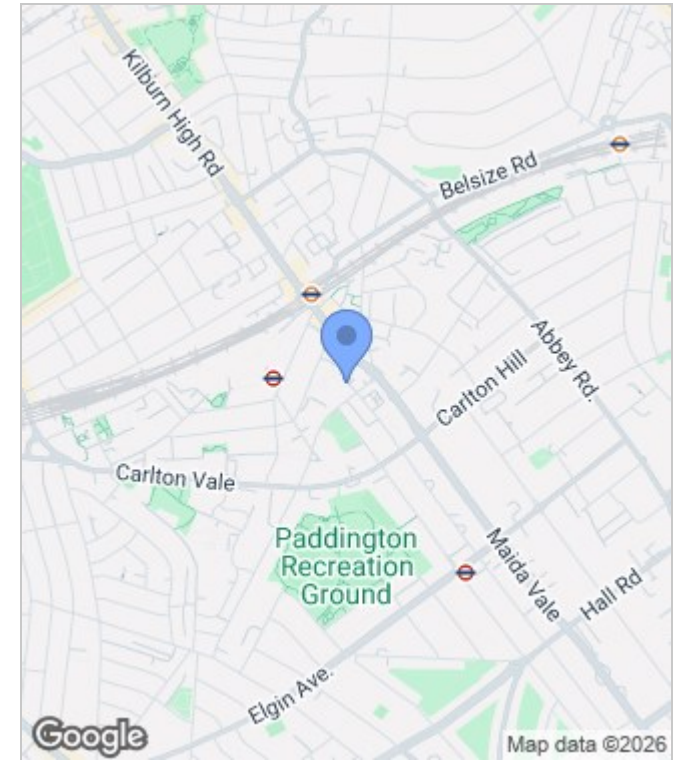
The house is a short walk away from the vast array of shops, restaurants and cafes on Elgin Avenue and Kilburn High Road as well as the green open space of Paddington recreation ground. There are extensive transport links within easy reach with Kilburn Park station (Bakerloo line) just 0.3 miles away, Maida Vale station (Bakerloo line) 0.4 miles away and Queen's Park station (Bakerloo and London Overground lines) 0.8 miles away.



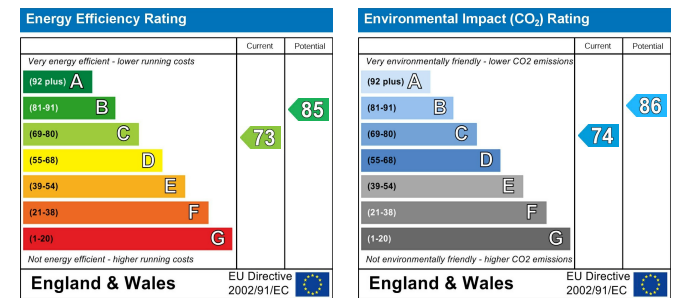
Floor Plan



Area Map



Energy Performance Graph



These particulars, whilst believed to be accurate are set out as a general outline only for guidance and do not constitute any part of an offer or contract. Intending purchasers should not rely on them as statements of representation of fact, but must satisfy themselves by inspection or otherwise as to their accuracy. No person in this firm's employment has the authority to make or give any representation or warranty in respect of the property.

